

THE

MODERN LUXURY

ATLANTAN

MAGICAL MAINE

REDEFINING LUXURY IN NEW ENGLAND

NEW TIMES

HOT WATCHES FROM THE SWISS SIHH SHOW

PLUS

BUCKHEAD'S REAL ESTATE BULLSEYE
KEITH SUMMEROUR'S NEWEST TOME
ATLANTA'S MOST PAMPERED PUP

SPRING FASHION & BEAUTY

Royal Garments for Modern Times / Must-Haves for the Season / MAC's Latest Collabs / Bags Bonanza / Tips From Local Tastemakers & More

FOOD FODDER

A CLASSIC GOES CASUAL

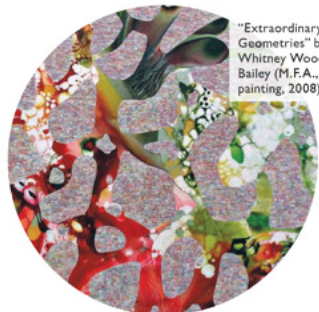
By Jenna Grace Cooper

Atlas, The St. Regis Atlanta's resident five-star resto that boasts art as appealing as the menu, just became even hotter on the Atlanta dining scene with the opening of **The Tavern at Atlas**. The recently unveiled revamp is just inside the stunning eatery's grand entrance, where the charming library and lounge once lived. Now outfitted with tall wooden tables for two and oversized armchairs, dim lighting and more, The Tavern makes for the perfect post-office and pre-dinner hangout spot to grab a drink or light bite. Think Cocktail à la Louisiane made with whiskey, vermouth, bitters and more; or the Midnight Aviator martini, a sweet mixture of gin, rosemary, basil-infused syrup and a Luxardo cherry. Don't skip out on the delectable menu that includes unique small plates, including petit lobster pot pie served with smoked bacon, pearl onion and white Romaine; and the citrus-cured salmon flatbread that's made mouthwatering by the red onion radish slaw, capers and dill. So whether you're there for the sips or the bites—or both—grab a seat and sit a spell in your casual best.

88 W. Paces Ferry Road NW,
atlasrestaurant.com

ART ADDITIONS

FITTING FINISHING TOUCHES If you're looking for the final flourish for a home or business and want to support a network of more than 45,000 student, faculty and alum artists, head to **SCAD Art Sales**, the school's newest venture. One part curator and one part interior designer, the experts at SCAD Art Sales can help you perfectly procure works while helping ensure they easily fit into your existing collection and space. When paired with their custom framing, white-glove installation and delivery options, this consultancy gives the most particular of Atlantans access to emerging artists while offering clients a place among the ranks of SCAD Art Sales' already formidable roster, which includes the Mercedes-Benz Stadium, Heathrow Airport and Atlanta's Facebook office. *Works from \$500-\$10,000, scadartsales.com* —LF



"Extraordinary Geometries" by Whitney Wood Bailey (M.F.A., painting, 2008)